

## Walking Through Life Series...

'Sharks' are unpredictable hazards that may wait, lurk and strike in any situation, especially when you are least expecting it.

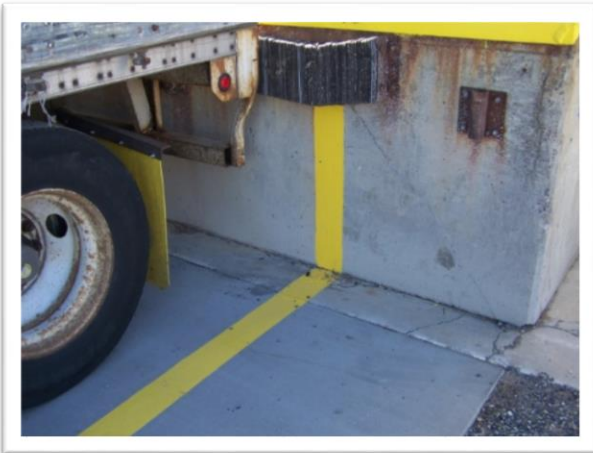
### "Caught Between" Injuries

The final 'shark' to avoid as we walk through life is **caught between** injuries.

**Caught between** injuries involve a body part that gets caught in a pinch point.

#### Specific Examples Include:

- A hand caught in a shutting car door.
- An employee in a warehouse is standing at a dock door directing a trailer that is backing up. His foot is on the edge of the dock when he leans out to give hand signals to the driver. The trailer makes contact with the dock bumpers and the employee's foot is **caught between** the dock and the trailer.



### Caught Between Injuries

Can you spot the hazard here?



Fingers are directly in the path of the pinch point. If the barrel slips, his hands or fingers will get pinched or crushed depending on the weight of the barrel.

**Use proper lifting and transportation techniques.**

## Supervisor Briefing Points

### Preventing *Caught Between* Injuries

- Place guards on or around moving parts of machines and processes.
- Ensure that guards removed during maintenance are replaced prior to placing the machine back into service.
- Highlight hazardous pinch point areas with yellow paint, black and yellow tape, signs or other highly visible materials.
- Improve lighting where necessary to help workers identify pinch point hazards on their machines or at their jobs.
- Use lockout/tagout when performing maintenance or repair on a machine.
- Wear appropriate workplace attire in industrial areas, e.g., no unrestrained long hair, no jewelry, shirts tucked into pants, etc.
- Use flashing lights or alarms to warn everyone that something is in motion.



### Ask yourself the following:

- ✓ Do I look for possible **caught between** situations?
- ✓ Am I aware of moving machinery in relation to my hands and feet?
- ✓ At work and home, do I always use the manufacturer's guards?

### EMS TIP:

*The key to a successful and safe job is planning it thoroughly. Plan for all contingencies and have controls in place to perform the job safely and without harm to the environment.*



### CORE FUNCTION 2: *Analyze Hazards*